

The best way to contact your doctor is through our web portal!



Weill Cornell Connect

<https://mychart.med.cornell.edu/mychart/>

At any time, you can request or make follow-up appointments, prescription refills, review your health history, and view and pay your medical bills.

Please do not use the portal for urgent matters.

To set up your account at Weill Cornell Connect you will need a unique ID number assigned to you, which you can obtain from our front desk staff.

If you would like to call us, our main number is **646-962-9800**. Please follow the audio prompts.

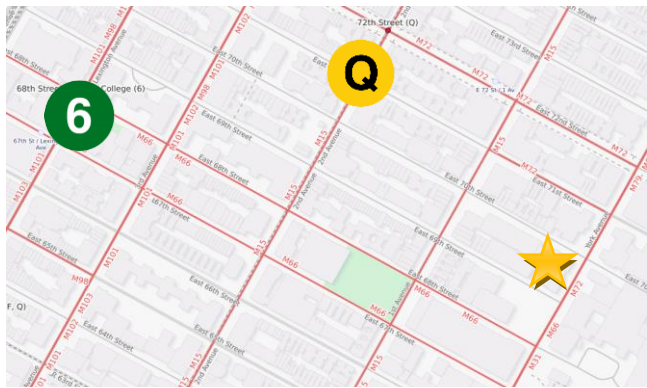
Our Location:

**1305 York Avenue, 2nd Floor
(On the corner of 70th Street)**

Q train – 72nd Street Stop
6 train – 68th street Stop

Parking:

- Available from private company in building (entrance on York Avenue)
- Independent lots and street parking nearby



Research

Our research is focused on reversing the progression of multiple sclerosis by promoting regeneration of myelin and preserving healthy axons and neurons. We conduct innovative translational research designed to directly improve the lives of people with multiple sclerosis. For more information, please visit our website at:

<http://weill.cornell.edu/mscenter/>

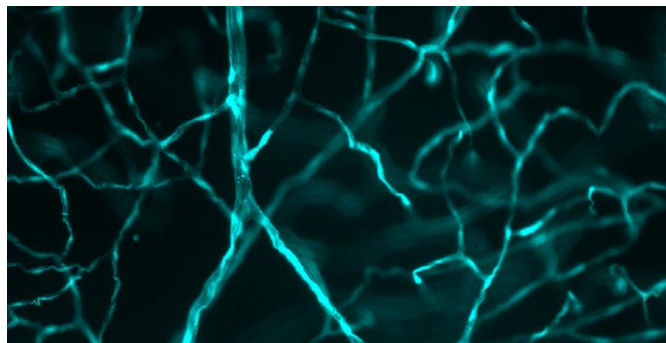
DONATIONS

Your generous support helps our group provide an unparalleled level of service and offer cutting-edge treatments to patients with multiple sclerosis.

All contributions, regardless of size, make an important difference, private funding like yours play a significant role in our ability to not just continue our work but to expand our research and clinical programs.

Your gift can be directed to support the work of a specific faculty member or the Judith Jaffe MS Center. Checks should be made payable to The Weill Cornell Medicine. Attention: Thomas Horton, Department of Neurology, Weill Cornell Medicine, 525 East 68th Street, Suite F610, New York, NY 10065.

All gifts are fully tax-deductible according to all local and federal laws. If you have any questions, please contact Mr. Horton at 212-746-4599. He would be happy to answer any questions you may have.



Weill Cornell MS Center

*Pathway to Your
Multiple Sclerosis Care*

We are proud of our commitment to bring you world class, compassionate, individualized care.

A diagnosis of multiple sclerosis does not prevent you from having a fulfilling and productive life.

We're with you all the way!



"The staff at the Weill Cornell MS Center does everything they can to help me feel better."

"I tried three other centers before I found the compliment of emotional and world class medical care I receive at the Weill Cornell MS Center."



"I refuse to let MS control my life. Be strong, stay positive, and welcome support!"



**Weill Cornell
Medicine**

**NewYork-Presbyterian
Weill Cornell Medical Center**

Meet Your Multiple Sclerosis Team at the Weill Cornell MS Center



Dr. Susan Gauthier



Dr. Ulrike Kaunzner



Dr. Nancy Nealon



Dr. Jai Perumal



Dr. Tim Vartanian
(Director)



Clinical Nurse:
Stacyann
Foster, RN,
BSN, MSCN



Infusion Nurse:
Oasia Holback,
RN

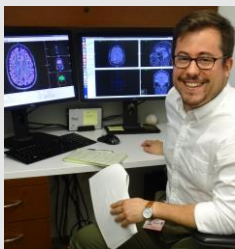
Our Administration Team

Leslie Randall-Rivas
Andrea Orjuela
Elizabeth Caban
Chinise Richmond



Our Clinical Research Team

Eric Morris
Alexandra
Kocsik



Some Basic Facts about Multiple Sclerosis

- Multiple Sclerosis is an inflammatory disease where your immune system is triggered to attack the central nervous system, which includes the brain, spinal cord, and optic nerves.
- The most common form of multiple sclerosis is relapsing remitting multiple sclerosis (RRMS), which is characterized by attacks or relapses with periods of clinical remission in-between.
- A less common form of multiple sclerosis is called primary progressive MS, which is characterized by a slowly progressive form of disease from onset, without clear-cut relapses.
- A diagnosis of multiple sclerosis is made based on your symptoms, neurologic examination, and findings on MRIs, and, if needed, a spinal tap.
- In most instances, when multiple sclerosis is suspected, findings on MRI of the brain and spinal cord are adequate to confirm the diagnosis.
- If a diagnosis of multiple sclerosis cannot be confirmed based on your MRI findings, your doctor may request a spinal tap.
- There are several disease-modifying treatments for multiple sclerosis, which include oral medications, infusions, and injections.
- Your doctor will discuss the options with you and find the medication that is the best fit for you.
- Apart from disease-modifying treatments, you may also take medications to help with symptoms to improve your quality of life.

Your Multiple Sclerosis Care

Once you are diagnosed, follow-up appointments are usually every 3 to 6 months.

MRIs are usually every year. However, you may get MRI's more frequently if necessary. MRIs are obtained to ensure that there is no disease activity.

Blood tests are also monitored periodically depending on your medication.

Patients requiring infusion treatments have the convenience of getting them at our on-site infusion center.

Your MRIs can be obtained at our state-of-the-art MRI facility staffed with expert neuroradiologists in the department of radiology.

We collaborate and closely work with other specialists to optimize your multiple sclerosis care. Specialists you might be referred to include:

Neuro-ophthalmology -
Weill Cornell Neuro-Ophthalmology
Tel: 646-962-2020

Urology - Weill Cornell Urology
Tel: 646-962-4811

Psychiatry - Weill Cornell Psychiatry Center
Tel: 646-962-2820

Rehabilitation Therapy -
Weill Cornell Neurological Rehabilitation Medicine
Tel: 212-746-1500

Other conditions treated at our center include:

- Neuromyelitis Optica
- Transverse Myelitis
- Acute Disseminated Encephalomyelitis (ADEM)
- Undefined White Matter Diseases of the Central Nervous System